

300

MISSION



PARAMOUNT  
GROUP

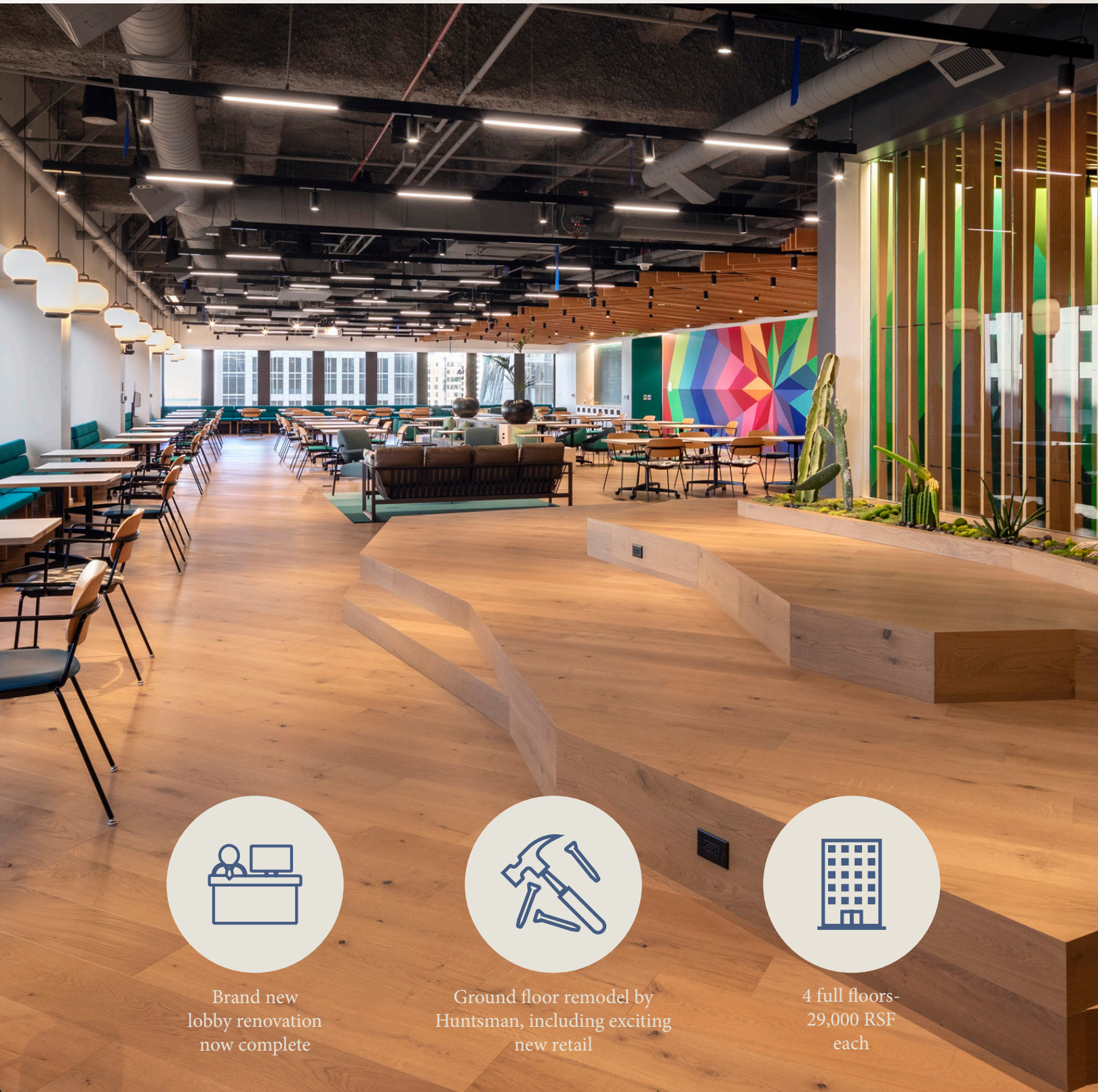


Jones Lang LaSalle Brokerage, Inc. Real  
Estate. License #: 01856260



# Welcome to the new 300 Mission

# Retail just an elevator ride away



Where Luxury & Fitness  
Meet 45,000 RSF



Equinox

Mendocino Farms



Enjoy fresh  
ingredients you  
can feel good  
about



Brand new  
lobby renovation  
now complete



Ground floor remodel by  
Huntsman, including exciting  
new retail



4 full floors-  
29,000 RSF  
each



# Ideal Location



Located in the South Financial District



Surrounded by some of San Francisco's hottest restaurants



1 block walk to Salesforce Park



Adjacent to new Transbay Terminal & 5.4 acre park



A 1/2 block walk to BART & MUNI



3.5 block walk to the Ferry Building



Easy access to I-80 and Bay Bridge



# Local Amenities

Your new HQ in the center of it all.



 36 Restaurants

 5 Shopping Centers

 10 Hotels



# Property Features



668,197 RSF across 23 stories



Large +/- 29,000 RSF floor plates



Highly efficient 13% load factor



Brand new showers and lockers



Secured subterranean parking



On-site property management



On-site security 24/7



Landscaped outdoor plaza



# Availabilities

202,928 RSF Available

AVAILABLE 5/1/25 — 29,276 RSF

FLOOR 15

AVAILABLE 10/1/25 — 28,485 RSF

FLOOR 10

AVAILABLE 11/1/25 — 29,398 RSF

FLOOR 9

AVAILABLE 11/1/25 — 28,485 RSF

FLOOR 8

AVAILABLE NOW — 29,398 RSF

FLOOR 7

AVAILABLE NOW — 29,398 RSF

FLOOR 5

AVAILABLE NOW — 28,488 RSF

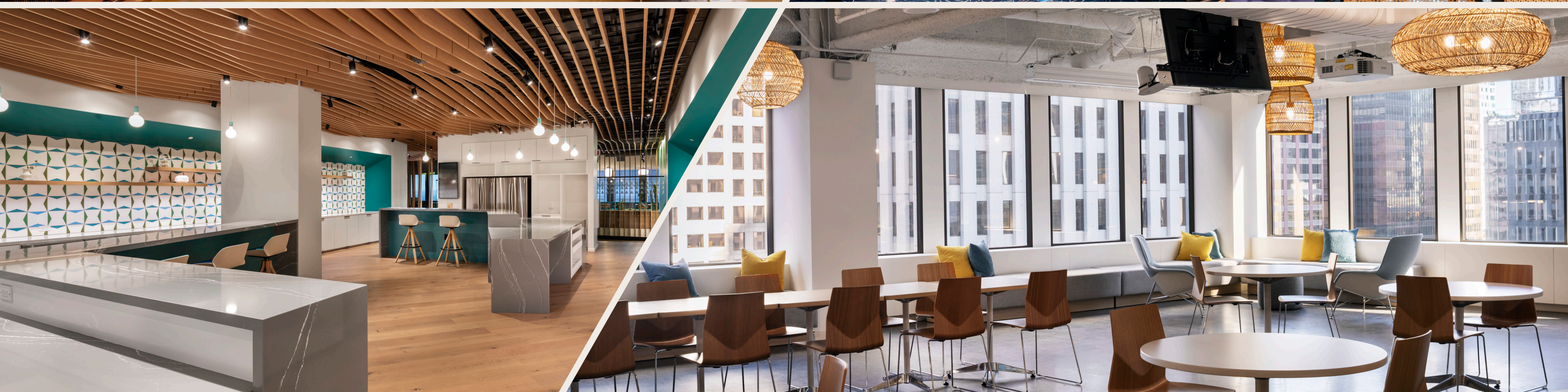
FLOOR 4

Contig. Block of 115,766 RSF Available 11/1/25

Contig. Block of 57,886 RSF Available Now



# Flexible layouts to suit a variety of tenants





# Brand new bike, shower and locker room

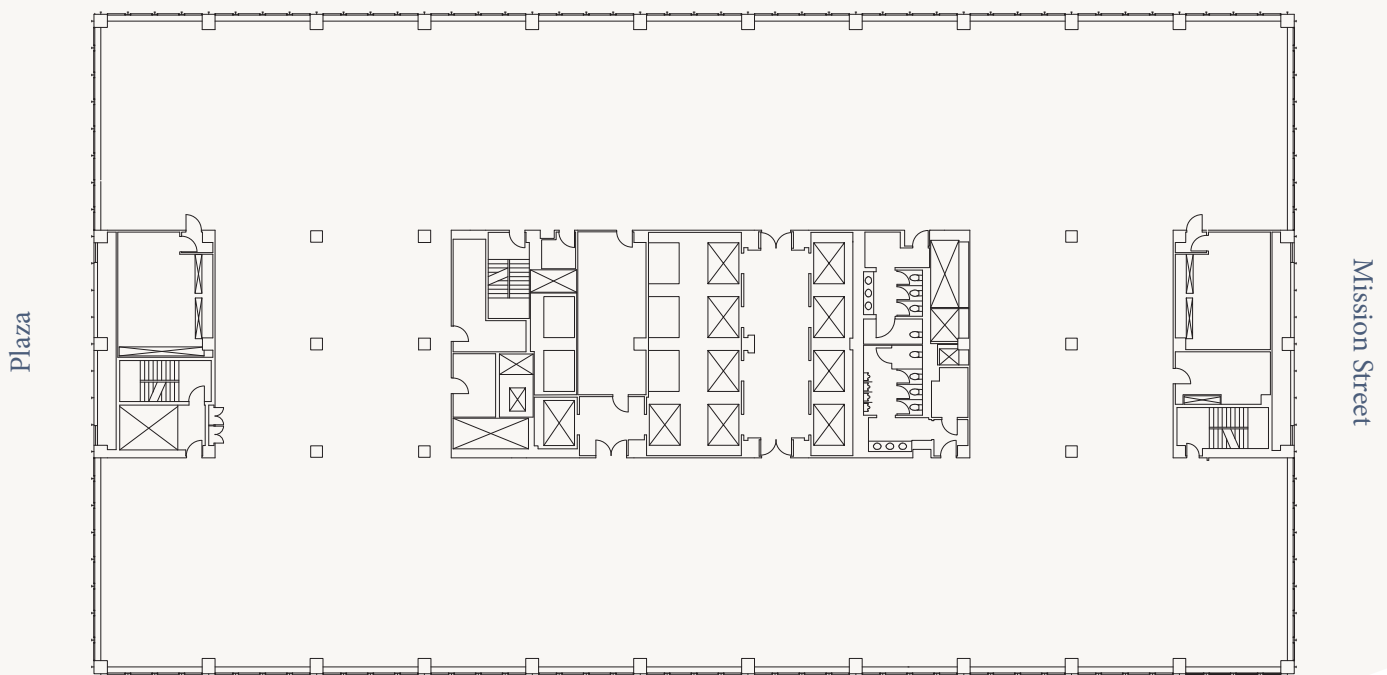




# SUITE 400 28,488 RSF

## CORE SHELL PLAN

Beale Street



- Available now
- Excellent full floor opportunity
- Large, predominately column-free floor plate

Christopher Roeder 4153954971 [chris.roeder@jll.com](mailto:chris.roeder@jll.com) RELicense#01190523  
Wes Powell 4153954901 [wes.powell@jll.com](mailto:wes.powell@jll.com) RELicense#01702003  
Ted Davies 4153954972 [ted.davies@jll.com](mailto:ted.davies@jll.com) RELicense#01460185  
Tom Doupe 4153954933 [tom.doupe@jll.com](mailto:tom.doupe@jll.com) RELicense#01921218

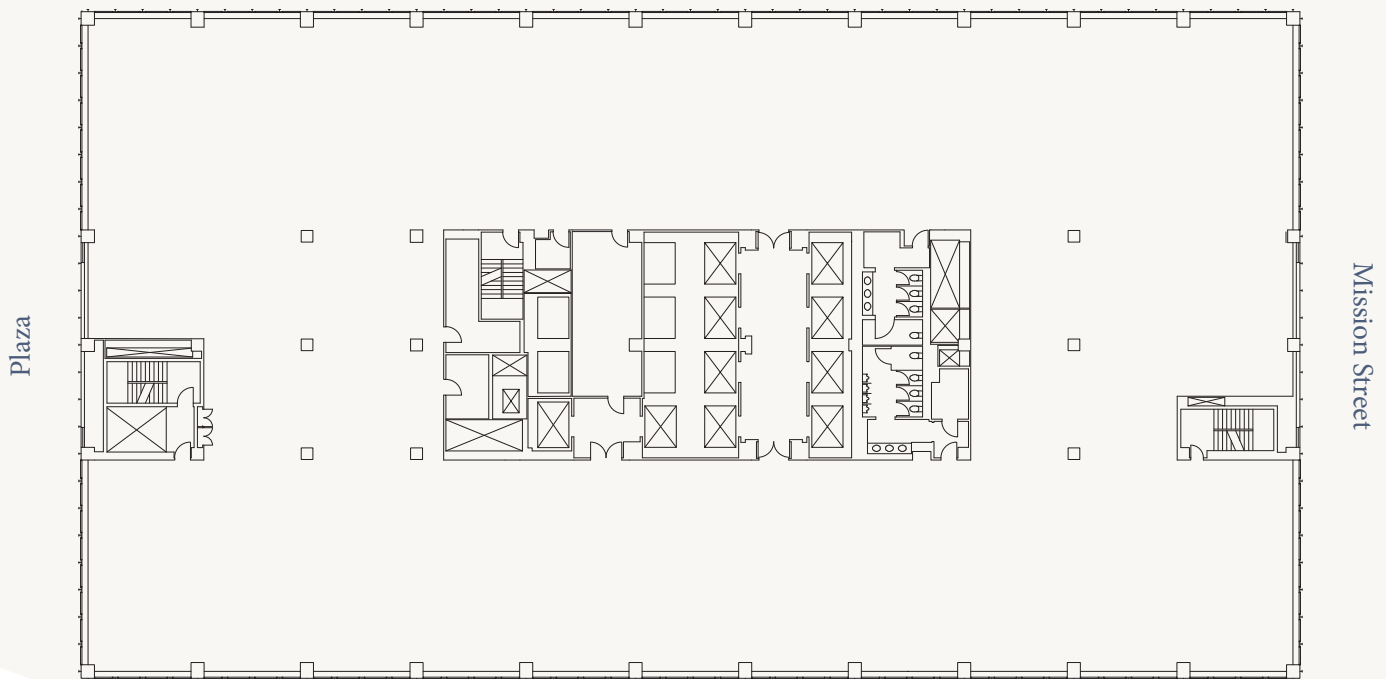




# SUITE 500 29,398 RSF

## CORE SHELL PLAN

Beale Street



- Available now
- Excellent full floor opportunity
- Large, predominately column-free floor plate

Christopher Roeder 4153954971 [chris.roeder@jll.com](mailto:chris.roeder@jll.com) RELicense#01190523  
Wes Powell 4153954901 [wes.powell@jll.com](mailto:wes.powell@jll.com) RELicense#01702003  
Ted Davies 4153954972 [ted.davies@jll.com](mailto:ted.davies@jll.com) RELicense#01460185  
Tom Doupe 4153954933 [tom.doupe@jll.com](mailto:tom.doupe@jll.com) RELicense#01921218



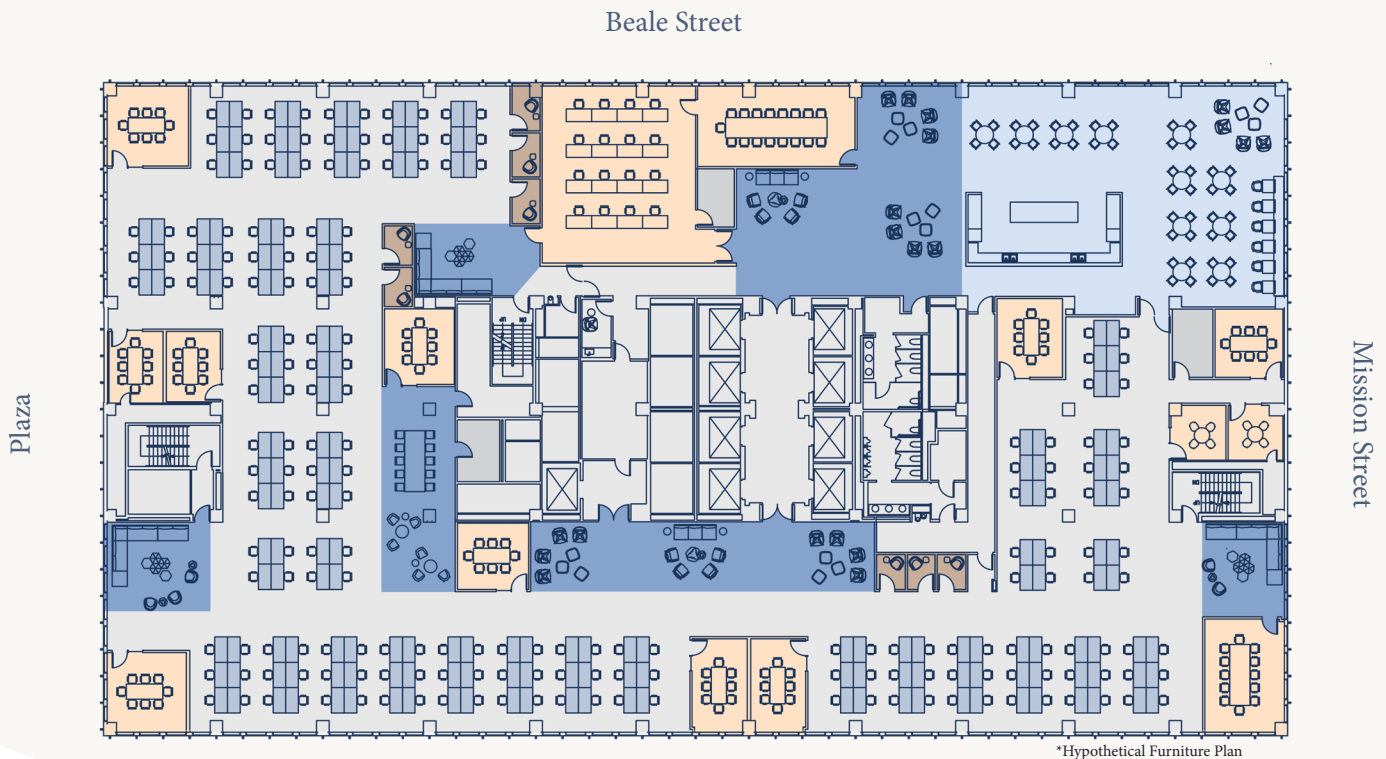


VIRTUAL  
TOUR

# SUITE 700

## 29,398 RSF

AS-BUILT PLAN  
HYPOTHETICAL FURNITURE



\*Hypothetical Furniture Plan

Conference Rooms Open Desks Lounges Phone Rooms Kitchen

- Available now
- Excellent full floor opportunity
- Large, predominately column-free floor plate
- High-end creative build-out with exposed ceilings and polished concrete rooms
- Large open gallery kitchen
- 2 all-hands team board rooms
- 11 medium to large conference rooms
- 8 phone rooms
- 12.2% load factor
- Can accommodate 212 desks
- 1 person per 150 RSF

ChristopherRoeder 4153954971 chris.roeder@jll.com RELicense#01190523  
Wes Powell 4153954901 wes.powell@jll.com RELicense#01702003  
Ted Davies 4153954972 ted.davies@jll.com RELicense#01460185  
Tom Doupe 4153954933 tom.doupe@jll.com RELicense#01921218

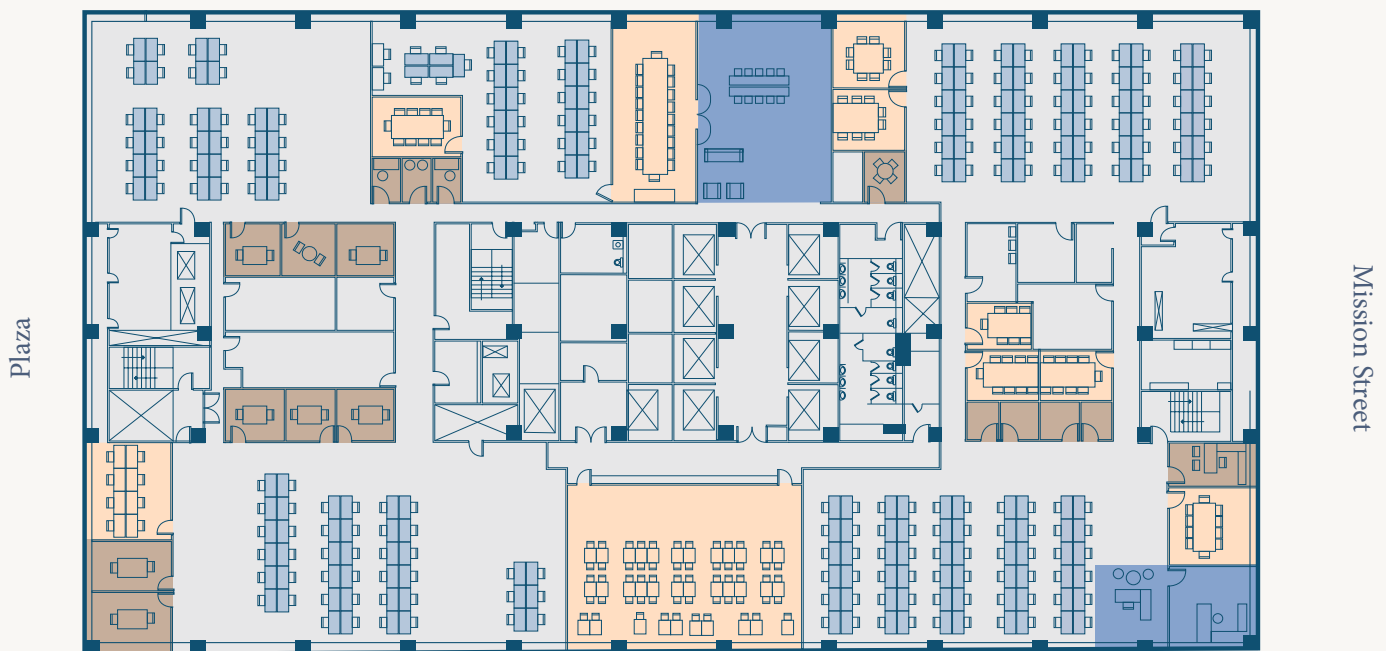




# SUITE 800 28,485 RSF

## AS-BUILT PLAN

Beale Street



Conference Rooms Open Desks Lounges Phone Rooms Kitchen

- Available 11/1/2025
- Furniture may be available
- Open space for ~240 workstations
- Highly creative floor
- Large all-hands kitchen
- 27 meeting rooms
- Mother's room

ChristopherRoeder 4153954971 chris.roeder@jll.com RELicense#01190523  
Wes Powell 4153954901 wes.powell@jll.com RELicense#01702003  
Ted Davies 4153954972 ted.davies@jll.com RELicense#01460185  
Tom Doupe 4153954933 tom.doupe@jll.com RELicense#01921218





# SUITE 900 29,398 RSF

## AS-BUILT PLAN



- Available 11/1/2025
- Furniture may be available
- 148 workstations
- Large all-hands kitchen and training room
- 21 meeting rooms
- 14 phone booths
- 2 kitchenettes

Christopher Roeder 415 395 4971 chris.roeder@jll.com RELicense#01190523  
Wes Powell 415 395 4901 wes.powell@jll.com RELicense#01702003  
Ted Davies 415 395 4972 ted.davies@jll.com RELicense#01460185  
Tom Doupe 415 395 4933 tom.doupe@jll.com RELicense#01921218





# SUITE 1000 28,485 RSF

## AS-BUILT PLAN



Conference Rooms Open Desks Lounges Phone Rooms Kitchen

- Available 10/1/2025
- Fully furnished plug-and-play creative floor
- Large all-hands kitchen and training room
- 220 workstations
- Secondary coffee bar
- 22 meeting rooms
- Mother's room with plumbing

ChristopherRoeder 4153954971 chris.roeder@jll.com RELicense#01190523  
Wes Powell 4153954901 wes.powell@jll.com RELicense#01702003  
Ted Davies 4153954972 ted.davies@jll.com RELicense#01460185  
Tom Doupe 4153954933 tom.doupe@jll.com RELicense#01921218

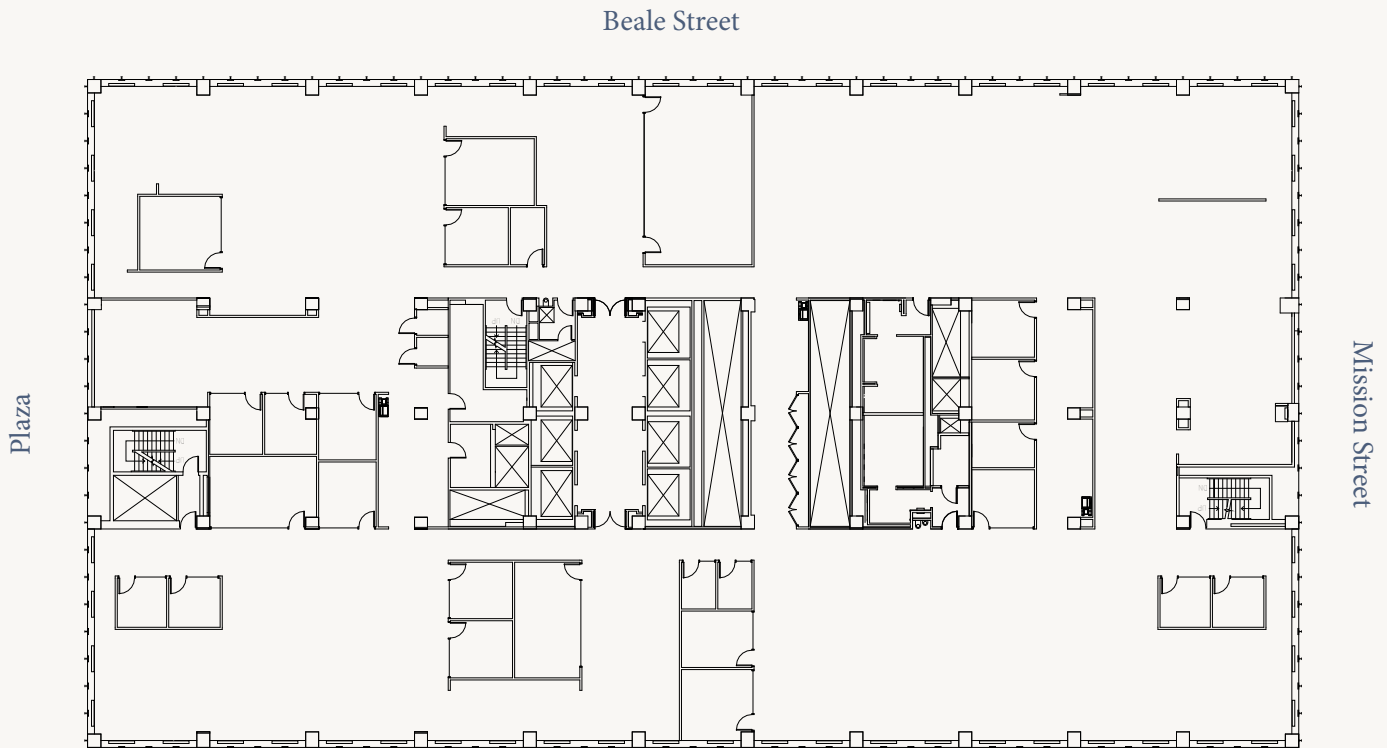




VIRTUAL  
TOUR

# SUITE 1500 29,276 RSF

AS BUILT PLAN



- Planned brand new full floor creative spec suite estimated delivery 5/1/25
- 18 meeting rooms
- 3 medium conference rooms
- Wellness room
- 1 large boardroom
- Large all-hands kitchen with lounge
- Second kitchen with lounge and reception
- Open space for 168 workstations

ChristopherRoeder 4153954971 chris.roeder@jll.com RELicense#01190523  
Wes Powell 4153954901 wes.powell@jll.com RELicense#01702003  
Ted Davies 4153954972 ted.davies@jll.com RELicense#01460185  
Tom Doupe 4153954933 tom.doupe@jll.com RELicense#01921218







300

MISSION



Christopher Roeder  
+1 415 395 4971  
chris.roeder@jll.com  
RE License # 01190523

Wes Powell  
+1 415 395 4901  
wes.powell@jll.com  
RE License # 01702003

Ted Davies  
415 395 4972  
ted.davies@jll.com  
RE License # 01460185

Tom Doupe  
415 395 4933  
tom.doupe@jll.com  
RE License # 01921218